

# Alaska Department of Fish and Game

Habitat Section  
Southeast Region



**106-43-10590**

**ADDITION**

**Water body name:**

**Survey date:** 8/23/2023

**Quad:** Petersburg D-5

**Species & Lifestage:** CHp, COp, Pp, DVp, SHp

**Upper Reach Latitude:** 56.970587 **Longitude:** -133.503545

**Survey crew:** CD, FC, EK

**Lower Reach Latitude:** 56.870079 **Longitude:** -133.332602

**Findings:** We surveyed this cataloged stream using a backpack electrofisher, baited minnow traps, and GPS and captured juvenile coho salmon, cutthroat trout, and Dolly Varden (Figure 1). Stream maintains a low gradient and has spawning substrate throughout the area surveyed (Table 1; Figures 2–4). The survey was concluded due to a lack of time; anadromous fish habitat continues upstream of final survey point.

**Recommendations:** Extend upper extent of Stream No. 106-43-10590 in the anadromous waters catalog and add rearing coho salmon to species (Figure 5). Extend the downstream reach of stream into the intertidal (Figure 6).

**Nomination:** Pending

Table 1.—106-43-10590 survey data.

Waypoint	Latitude	Longitude	Notes	Stream Width ft	Stream Substrate	Habitat Features	Gradient %	Sample Effort	Sample Results
684	56.959217	-133.493492	Minnow trap at 1318. Should come back here to efish.						1 CO 2 CT
767	56.959675	-133.494270	Fishing upstream of Coho capture under bridge. Tributary enters river left. Excellent spawning and rearing habitat.	20-25	Large Gravel		2-4		CT DV
768	56.959291	-133.495969	Trib river right. Coho capture just above tributary.					EF	2 CO
769	56.960115	-133.497909	Coho capture , stream course follows imagery				0-1		2 CO
770	56.960786	-133.501183	Stream continues, same gradient, no barriers.						
771	56.961932	-133.503707							2 CO
772	56.963052	-133.506231	Blown out beaver dams, good flow and nice spawning substrate						
773	56.965459	-133.507275	Stream curves significantly towards hillside as seen in imagery.		Large Gravel				
774	56.966441	-133.506029							2 CO
775	56.967027	-133.506098	Trib river right						
776	56.970607	-133.503667	Turning around here due to time, excellent low gradient spawning substrate habitat continues upstream. Worth further investigation if time allows.						2 CO 1 CT



Figure 1.—Juvenile coho salmon captured at waypoint 774.



Figure 2.—Stream No. 106-43-10590 at waypoint 684.





Figure 3.—Stream No. 106-43-10590 at waypoint 774.



Figure 4.—Old beaver dam at waypoint 772.



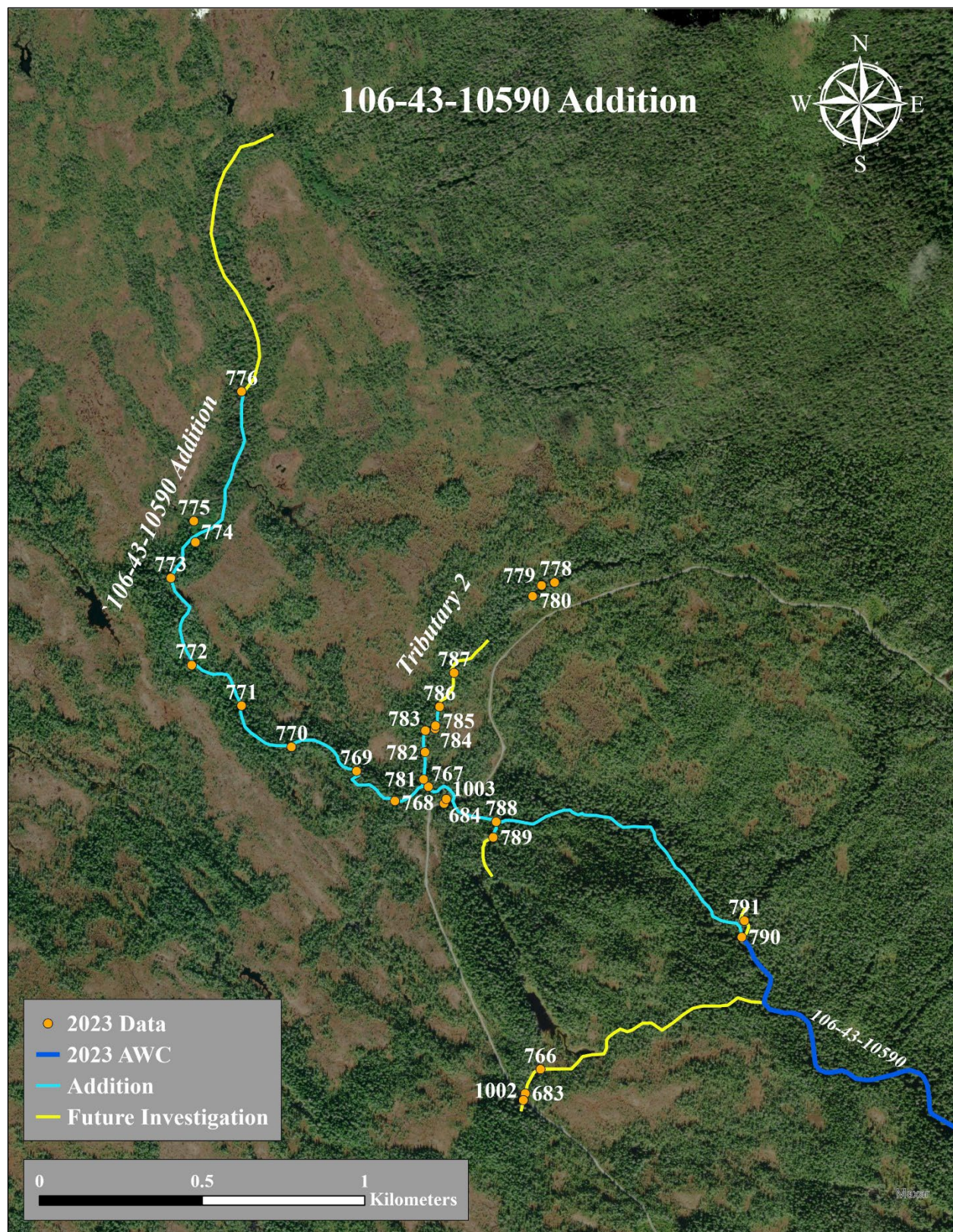


Figure 5.—Stream No. 106-43-10590 addition map.



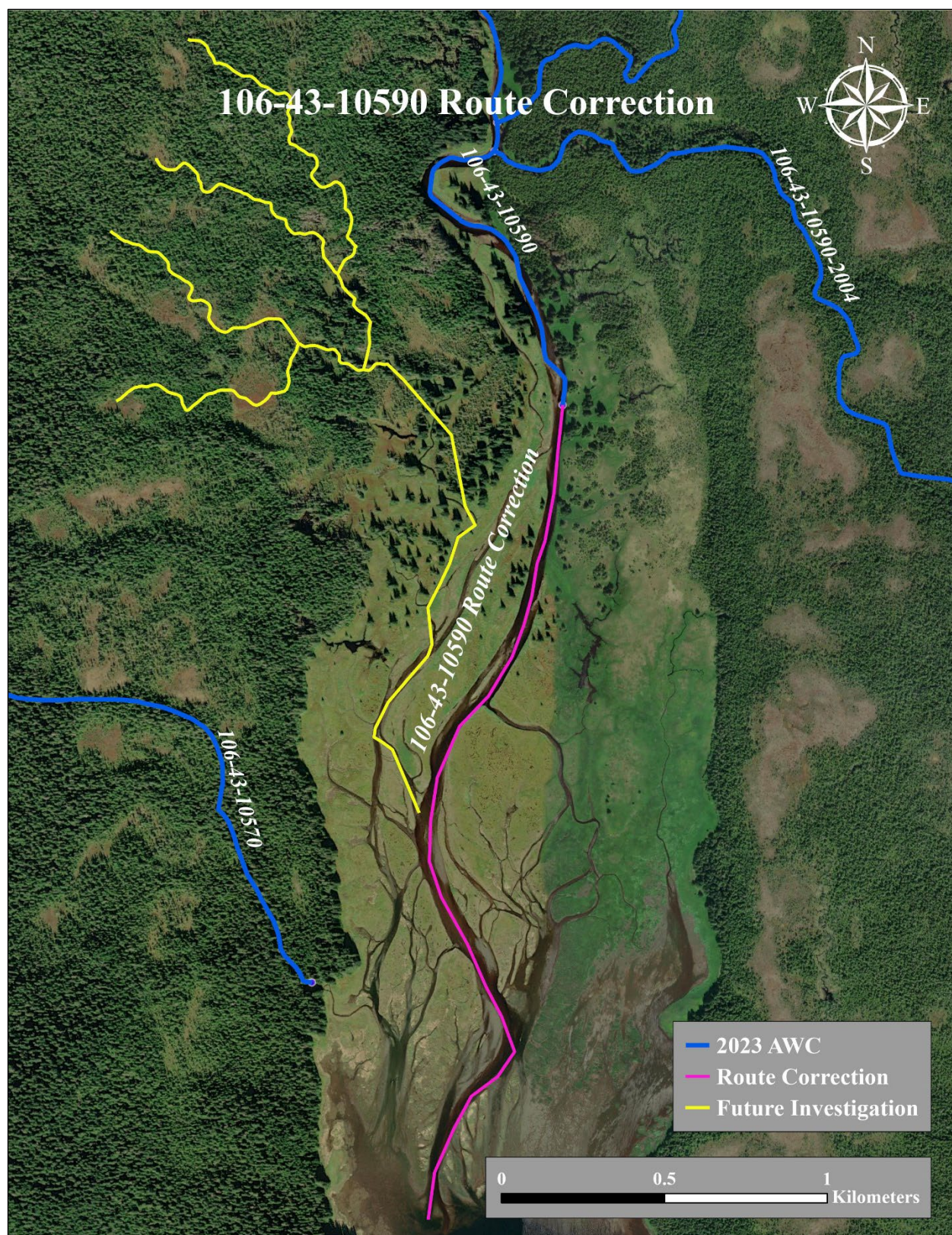


Figure 6.—Stream No. 106-43-10590 route correction map.